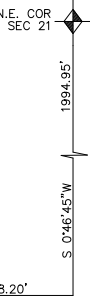


PART OF SEC. 21, T.5N., R.1W., S.L.B. & M.  
**PLEASANT VALLEY ESTATES—PHASE 4**

LOTS 53 TO 61  
 IN SOUTH OGDEN CITY

TAXING UNIT: 27

SCALE 1"=50'



SEE PAGE 305

SEE PAGE 239

WEST 968.20'

SEE PAGE 274

SEE PAGE 310

10' UTILITY EASEMENTS EACH SIDE OF PROPERTY LINES AS INDICATED BY DASHED LINES. ALL EASEMENTS TO BE USED FOR IRRIGATION, WATERLINES, DRAINAGE, SANITARY & STORM SEWERS, POWERLINES, TELEPHONE LINES & OTHER PUBLIC UTILITIES. FRONT PROPERTY LINE UTILITY EASEMENTS ARE 7 FEET WIDE. OTHER WIDTHS OF EASEMENTS ARE AS SHOWN.

FOR COMPLETE ENG. DATA SEE ORIGINAL DEDICATION PLAT IN BOOK 25, PAGE 55 OF RECORDS.

\* CORRECTION AFFIDAVIT  
 1535-1726

SEE PAGE 80

